

4

3

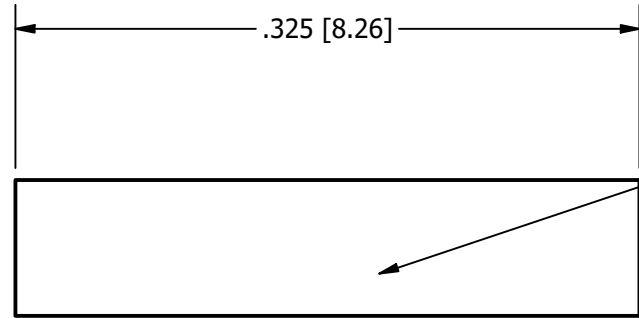
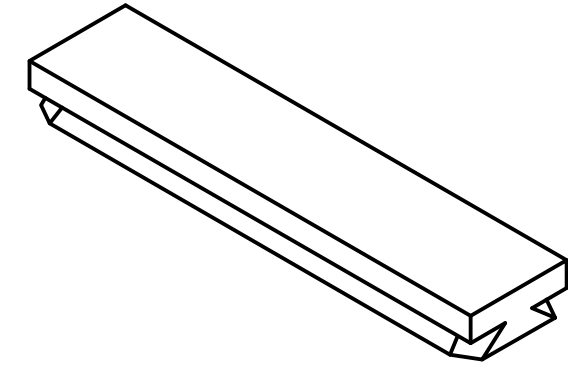
2

1

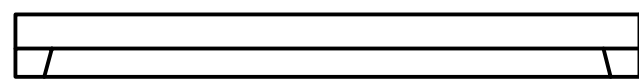
GENERAL NOTES:

- 1. MATERIAL: **ALUMINUM, 6061-T651**
- 2. SPECIAL FINISH: **NONE**
- 3. SURFACE ROUGHNESS (UNLESS SPECIFIED OTHERWISE): **32 Ra** (AVERAGE MICRO-INCHES)
- 4. INTERPRET DIMENSIONS AND TOLERANCES PER ASME Y14.5M-1994
- 5. DEBURR AND BREAK ALL SHARP EDGES, MAX 0.0015" (UNLESS SPECIFIED OTHERWISE)
- 6. PARTS ARE TO BE CLEAN AND FREE OF OIL, GREASE, AND OTHER CONTAMINANTS
- 7. DIMENSIONS INCLUDE ANODIZING, ELECTROPLATING, AND CHEMICALLY APPLIED FINISHES IF APPLICABLE

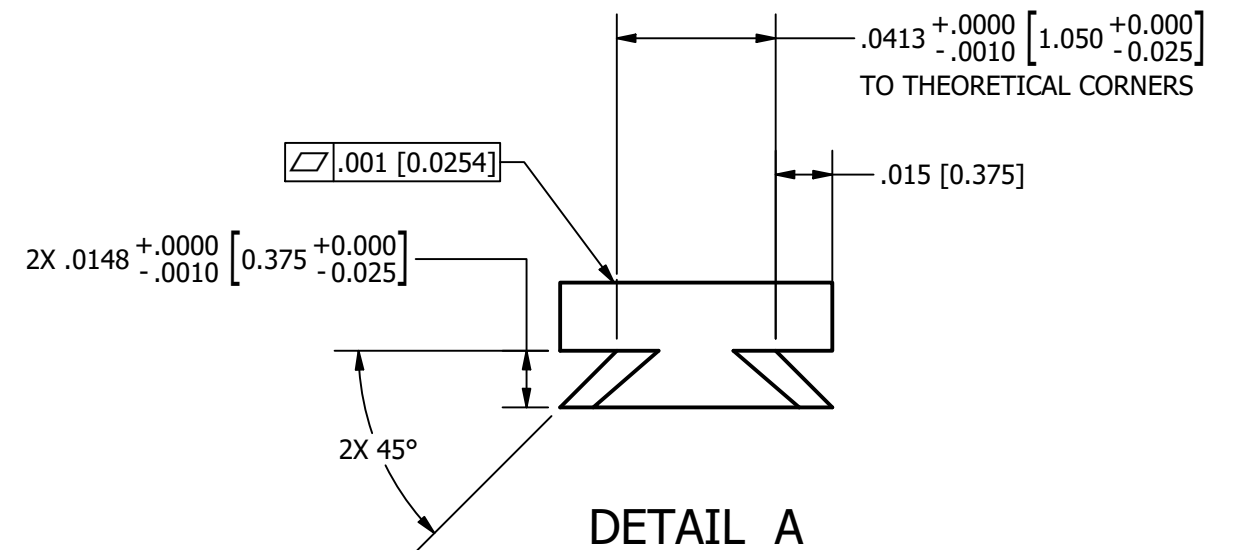
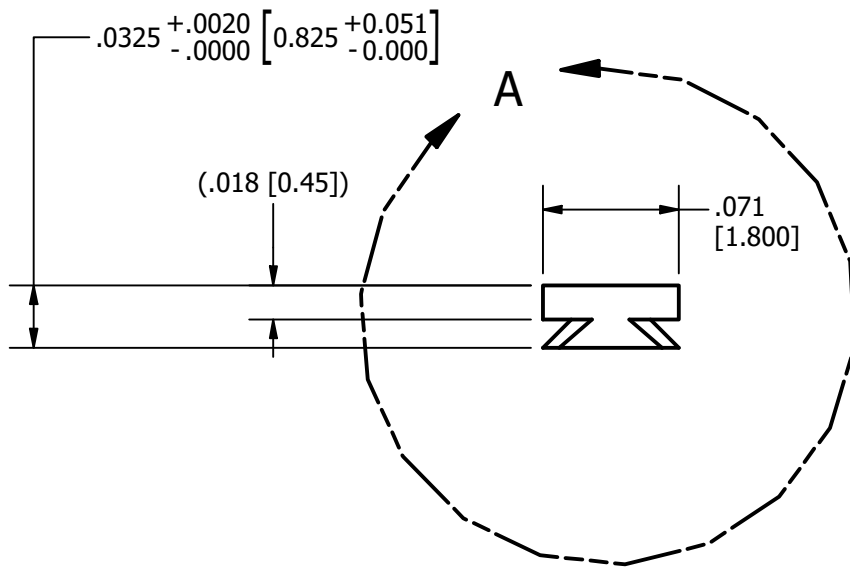
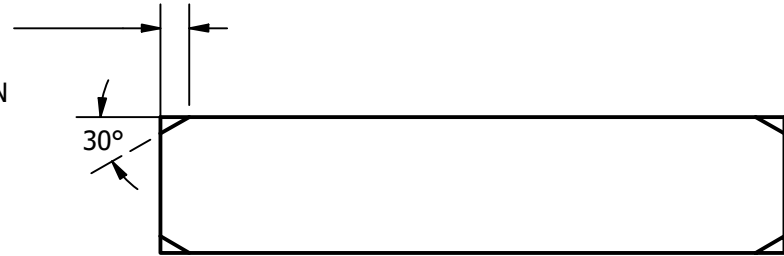
REVISION HISTORY				
ZONE	REV	DESCRIPTION	DATE	APPROVED
	-	INITIAL RELEASE	2021/02/09	hhmi\\solomone
	A	REDUCE DOVETAIL HEIGHT	7/7/2021	HHMI\\arnoldj
	B	ADJUST HEIGHT, ANGLE, AND REVISE TOLERANCES	9/20/2021	HHMI\\arnoldj
	C	REVISE SURFACE FINISHING NOTE, ADD METRIC FLATNESS	12/3/2021	HHMI\\arnoldj



ROUGHEN THIS SURFACE BY ROUGH MILLING FOR EPOXY BONDING



4X .015 [0.38]
CUT CHAMFER WITH
DOVETAIL CUTTER TO AID INSERTION



DETAIL A

NOTICE:
INFORMATION CONTAINED IN THIS DOCUMENT OR ANY REPRODUCTION THEREOF, IS PROPRIETARY INFORMATION AND PROPERTY OF HOWARD HUGHES MEDICAL INSTITUTE. IT SHALL NOT BE DISCLOSED, COPIED, DUPLICATED OR USED FOR MANUFACTURE, PRODUCTION OR PROCUREMENT, WITHOUT THE EXPRESS WRITTEN PERMISSION OF HOWARD HUGHES MEDICAL INSTITUTE.

(UNLESS SPECIFIED OTHERWISE)
PRIMARY UNITS: INCHES
[SECONDARY UNITS]: MILLIMETERS

PRIMARY TOLERANCES:
X.X ± 0.020
X.XX ± 0.010
X.XXX ± 0.005
X.XXXX ± 0.0005
ANGULAR ± 0.5 DEG

- DO NOT SCALE DRAWING -
THIRD ANGLE PROJECTION:

Howard Hughes Medical Institute

Research Campus

**NEUROPIXELS DOVE TAIL MOUNT GEN
2_NARROW.ipt**

SIZE C	PART NUMBER J009777	REV C	SHEET 1 OF 1
-----------	-------------------------------	----------	-----------------

4

3

2

1